

# MFTECHNOLOGY

Innovations that put you in complete control



VISION INNOVATION LEADERSHIP QUALITY RELIABILITY SUPPORT PRIDE COMMITMENT



MASSEY FERGUSON

# Powerful tools to boost performance and profitability

---

Massey Ferguson is recognised around the world as having unrivalled experience in agricultural technology. As the first company to offer electronic control on tractors, Massey Ferguson continues to commit substantial resources to research and development and now offers a whole range of highly innovative technical features, systems and aids aimed solely at making your business more efficient.

Collecting, monitoring and interpreting information is a key element of any successful enterprise today and farming is no exception. It enables closer control of costs, better use of time and more accurate measurement of performance.

But don't assume that you need to be an expert in electronics to benefit from Massey Ferguson Technology – it may be extremely clever and highly advanced, but it's very simple to set up and operate.

This brochure aims to provide potential users of Massey Ferguson Technology with an overview of what it's capable of achieving, what the many benefits are and how your farming practices can be enhanced in practical, day-to-day terms.



---

### AGCO Advanced Technology Solutions (ATS)

ATS provides design and development resources for the ever-more advanced technologies used in Massey Ferguson machines.

To aid the understanding of how these systems can be applied to your farming needs, the various technologies are now grouped into three specialist categories:-



#### Machine Control

Includes systems such as the Transmission Controller, Integrated Tractor Control System (ITCS), Datatronic III and Auto-Guide™.



#### Machine Management

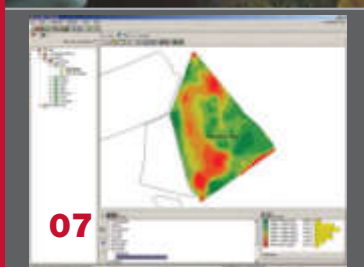
Includes functions relating to fleet/asset tracking, with GTA100 Communicator and GTA200 Record-Keeping providing the basis for this in the farm office.



#### Precision Farming

Includes the Fieldstar yield monitor and mapping, GTA300 Mapping and GTA400 Precision Farming.

# Contents



- 
- 01 Effortless tractor control** **Page 6**  
Massey Ferguson's innovative transmission controller system automates the transmission, PTO and four-wheel drive systems.
- 02 Datatronic III and Console I** **Page 8**  
The Datatronic III system, operating through the Console I terminal, is simply the best, most comprehensive tractor monitoring and control system in the industry.
- 03 Complete implement compatibility with ISOBUS** **Page 12**  
The Console I terminal complies with the latest international standards, allowing it to operate a range of different implements.
- 04 Auto-Guide** **Page 14**  
Auto-Guide automatic steering is proven to boost productivity, cut costs and save fuel by improving accuracy and preventing underlaps and overlaps.
- 05 Select a harvesting system to suit you** **Page 16**  
Massey Ferguson puts you in complete control of harvesting operations with a wide choice of technology to suit your individual needs.
- 06 Simplified, efficient record keeping** **Page 18**  
Datatronic III records important information about field operations, easily transferred into the unique GTA100 Communicator and GTA200 Record Keeping software programmes.
- 07 Mapping the way to precision farming** **Page 20**  
Move up to Mapping. With the addition of a GPS system to provide positioning, the cost-effective GTA300 Mapping program makes maps of yields or applications using information gathered during work.
- 08 You choose the technology you need** **Page 26**  
All Massey Ferguson equipment comes with a host of integrated automation aimed to boost efficiency. But you can choose added sophistication to whatever level you require to match your work, conditions and business.

# Technology for every application



---

Massey Ferguson technology can provide a solution for every application on your farm. Helping to cut costs, improve efficiency and boost productivity.

01 Cultivation & Seeding

02 Spraying & Spreading

03 Harvesting

04 Transport



# Effortless tractor control

Massey Ferguson's innovative transmission controller works efficiently in the background, monitoring and automating routine operations, relieving operators of repetitive tasks and protecting your investment.

---

Without any operator input, the transmission controller automatically controls and operates:

- Four-wheel drive operation
- Differential lock operation
- Four-wheel braking
- Transmission speed matching
- Smooth gear shifting and shuttling
- PTO activation

The transmission controller is supplied as standard equipment on all MF 5400, MF 6400, MF 7400 and MF 8600 Series tractors.

## Intelligent control

The transmission controller improves safety, reduces wear and prevents damage by monitoring the four-wheel drive engagement. At speeds of more than 14 km/h, drive is disengaged and re-engaged automatically when the speed falls below this limit, saving tyre wear and protecting the transmission.

When the brakes are applied, four-wheel drive is engaged automatically and turns off when the brake pedal is released. It is also engaged automatically if the differential lock is activated.

## Smart PTO operation

Smooth PTO starting is assured by the transmission controller, which monitors and controls engagement depending on load, protecting the tractor and implement. The PTO can be automatically switched off when the linkage is raised and is engaged again when the linkage is lowered\*.

## Transmission management

The transmission controller diligently monitors all transmission functions, smoothly engaging gears and preventing damage by, for example, blocking inappropriate gear selections. The system manages much of the operation of Dyna-6, including the outstanding AutoDrive system. In this application, both gears and ranges can be changed automatically at a pre-set engine speed.

Among its many functions on the Dyna-VT tractors, the transmission controller operates its various automatic modes as well as the SV1 and SV2 'cruise' control settings.

## Integrated control lifts output\*

The Integrated Tractor Control System (ITCS) option builds on the transmission controller, providing even more automatic operation and control to further ease operation and boost output.

This system will:

- Automate engine speed changes
- Monitor fuel consumption
- Control wheelslip
- Manage spool valve flow and timing
- Prioritise hydraulic flow

## Simplified headland turns

ITCS provides even more headland control functions on top of the powerful transmission controller features.

\*Not available on MF 5400 Series



01

### Fuel monitoring

Both 'trip' and total fuel used is monitored by ITCS, helping operators to improve efficiency and control costs.

### Wheelslip control

For better traction and improved performance, ITCS links the transmission with the three-point linkage to provide outstanding wheelslip control.

ITCS continually checks the slip and, if this increases above the set limit, the system instantaneously adjusts the height of the linkage to maintain traction.

### Spool Valve Management (SMS)

By memorising the flow and timing of electronically-operated spool valves, Spool Valve Management (SMS) ensures precise operation with minimum effort.

### Prioritise hydraulic flow

ITCS gives you the freedom to prioritise the oil flow delivered to either the linkage or the spool valves to optimise tractor and implement operation.



02



03



# Ultimate control and communication with Datatronic III

Massey Ferguson's Datatronic III is, quite simply, the most practical and advanced tractor and implement control system available. The easy-to-use system also comes with AGCO Advanced Technology Solutions' own multi-purpose GTA software, which builds into a complete machinery management, mapping and precision farming package.

Datatronic III leads the agricultural electronics revolution. Operators are provided with the unrivalled capacity to automate operations, simplify adjustments and manage complex tasks.

Complete control with Datatronic III:

- Comprehensive headland management
- Front and rear implement Dual Control
- Trailed Implement Control (TIC)
- Spool valve settings
- Dyna-VT settings
- Programmable memories
- Tractor settings securely backed-up
- Information station
- All-seeing video link

## Simple, instinctive operation

The Console I terminal features a 140mm screen with just six buttons to select functions and a large rotary dial for adjusting settings. An SD Card is used to transfer information on colour consoles.

Console I is fully ISOBUS compatible (see page 12), which allows this single terminal to control and monitor any implement designed to the same ISOBUS standard.

These are all accessed through eight main headings displayed on the screen: Work, Settings, Headland, EHS valves, Memories, Dual Control, ISOBUS and Video.

## Work menu keeps you informed

The clear Work screen keeps you in touch with tractor performance and settings.

Actual fuel consumption during work is simple to monitor on the Work screen as fuel/hr or fuel/area along with workrates.











The easiest to set, most comprehensive headland management system available today, Datatronic III gives total flexibility and control of up to 35 operations (from a choice of 41).

Headland management automates every conceivable function in a complete headland turn.

### Commencing the headland turn

-  slow the tractor by changing gear
-  one second time interval
-  lift a front-mounted implement
-  3m distance interval
-  lift the rear-mounted implement
-  disengage Auto-Guide
-  raise the markers
-  change engine speed
-  change gear to speed up the turn
-  first sequence completed

### Returning to work

-  slow the tractor by changing gear
-  one second time interval
-  engage Auto-Guide
-  lower the front mounted implement
-  increase engine speed back to working rpm
-  3m distance interval
-  lower the rear-mounted implement
-  lower the markers
-  increase forward speed
-  second sequence completed



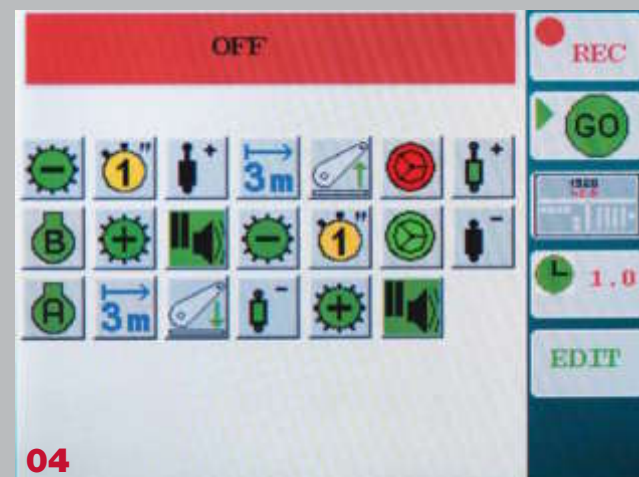
01



02



03



04



# Ultimate control and communication with Datatronic III

---

## Front & rear Dual Control

This remarkable system provides excellent control of semi-mounted ploughs by automating the furrow entry and exit. At the same time the system adjusts the plough's depth wheel in relation to the rear linkage. The same system is also used to control implements on the front linkage, automating depth settings and the entire operation, in synchronisation with the rear linkage.

## Trailed Implement Control

Massey Ferguson's unique Trailed Implement Control (TIC) system provides draft and wheelslip control for trailed implements, optimising performance and enhancing machine productivity.

## Simple spool valve control

Up to five electro-hydraulic spool valves are set and adjusted with Datatronic III. The clear screen is used to precisely adjust oil flowrate and kick-out timing and enable or disable the 'float' position, providing accurate control of ram extension and retraction.

## Dyna-VT settings

MF 7400 and MF 8600 Series tractors fitted with the Dyna-VT transmission, now have a new screen which allows the Dyna-VT parameters to be set through the 'work screen' application – a clear and easy way to make the most of all Dyna-VT's useful functions.

## Memorise data and settings

Six different memories enable the system to record information during operation on area worked, fuel use, hours worked and much more.

All the settings and parameters for up to six different implements can be stored by Datatronic III.

## Securely back-up those tractor settings

A truly unique feature of Datatronic III is the ability to save the memorised tractor settings to an SD Card and manage those settings before commencing work using the supplied PC software.

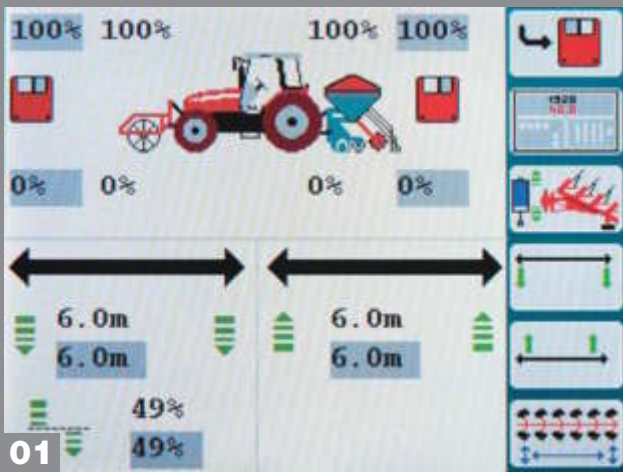
## Information station

One of Datatronic III's most powerful features is the ability to record a wide range of operating data directly to the SD Card.

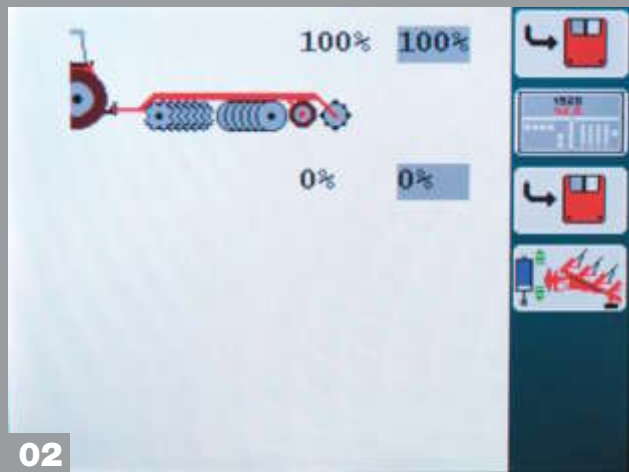
Datalogging allows the operator to input information on the operator, job name, farm name, field name, operation type and implement width.

## All-seeing Video link

Pictures from an on-board camera can be displayed on the Console I screen allowing operators to monitor complex implements or simply improve safety and efficiency when reversing.



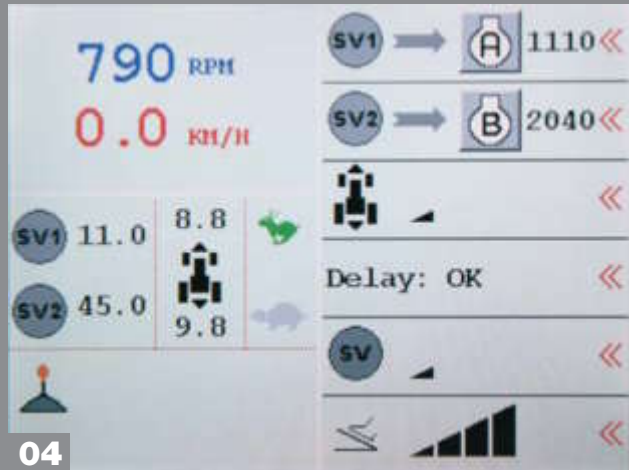
01



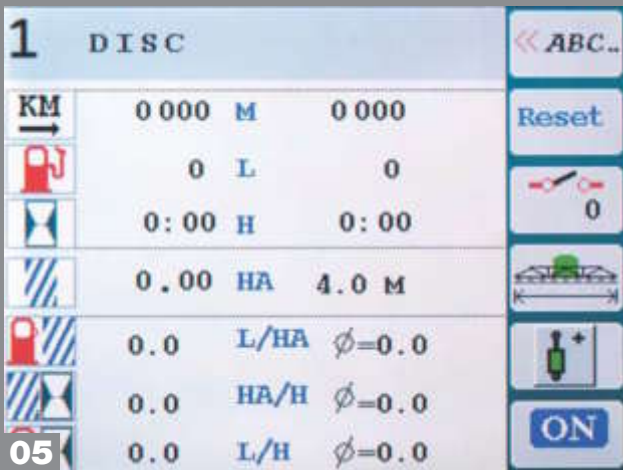
02



03



04



05



06



07



08

01 Front and rear Dual Control. 02 Trailed Implement Control. 03 Simple spool valve control. 04 Dyna-VT settings. 05 Memorise data and settings. 06 Securely back-up those tractor settings. 07 Information Station. 08 All-seeing video link.



# ISOBUS – one day all machines will work this way

Console I and Datatronic III are fully ISOBUS compatible. This international standard brings an end to cluttered cabs by allowing a single terminal to control and monitor implements designed to the same standard.

---

ISOBUS 11783 is basically the 'Windows®\*\*' system for the agricultural world. It allows an implement manufacturer's control system to be displayed on the Console I screen. Time and money is saved as there is no need for additional terminals in the cab.

**One Console for many machines**  
Massey Ferguson equipment is being designed to the ISOBUS 11783 standard.

The latest MF 2100 large square balers and the MF 555 planter can now both be controlled via the Console I terminal.

These two completely different implements can use the same Console I terminal as Datatronic III.

Simply plug the implement lead into the tractor's ISOBUS socket and the system automatically uploads the operating menus and displays them on the screen.

**Simple wiring**  
With the ISOBUS standard connection there is no need for additional wiring into the cab.

**Standardised operation**  
The information for each implement shown on the Console I terminal, regardless of manufacturer, follows the same routine of scrolling through menus, selection buttons and activation.

**Moving up another level**  
The higher-level C2000 Virtual Terminal is an option used to

control and record operation of the MF 555 planter. The ISOBUS 'Task Controller' can vary seed rate on-the-move.

**CAN do it all**  
An implement connected into the ISOBUS socket utilises the tractor's CAN-BUS network and shares information. The CAN, or Controller Area Network, is a system that transfers information via a data 'bus'.

\*\*Microsoft registered trademark



01



02



03



04



05

01 ISOBUS-compliant baler.

02 Baler control screen.

03 ISOBUS implement/tractor socket.

04 C2000 console showing ISOBUS task controller.

05 Simple system integration.



# Auto-Guide™ – leading you to extra productivity

Auto-Guide – hands-free boost to greater productivity. Auto-Guide automatically steers machines in parallel paths, ensuring the optimum use of the implement’s working width. This saves time, fuel and costs, reduces operator fatigue and enhances productivity.

## Benefit from hands-free operation

The system offers an immediate and tangible return on investment in many ways such as:

- Reducing overlaps/underlaps
- Improving accuracy of applications
- Better plant establishment
- Saving:-
  - Fuel
  - Time
  - Implement and machinery wear
- Cutting driver fatigue
- Reducing compaction with fewer tracks
- Controlled traffic farming

Auto-Guide will help maximise productivity and cut costs in all operations. Hands-free steering means the operator can focus on

the task, optimise settings and monitor the work more closely, which improves quality and increases productivity.

## Advanced Top Dock

The advanced Auto-Guide Top Dock is the heart of the guidance system and, as such, has been designed to be fully interchangeable between different tractors. The Top Dock provides the housing for the following key elements:

- GPS antenna
- GPS receiver and steering controller
- Dynamic Measuring Unit (DMU)

## Accuracy enhanced by DMU

The six-axis, Dynamic Measuring Unit uses an ‘electronic gyroscope’

to determine the machine’s position and direction.

It continuously monitors the tractor’s side-to-side movements (roll), whether the vehicle is tipping forwards or back (pitch) and the direction (yaw).

It uses this information to improve precision by accounting for any antenna movement or offset caused by working on slopes, bumpy terrain or hillsides.

## Integrated transferable system

The Auto-Guide Top Dock is easily transferred between different tractors, bringing steering guidance to your whole operation.

## Auto-Guide Accuracy and Flexibility

With Auto-Guide you are in control. You choose the system that provides the accuracy you need:

Accuracy level	Typical Operations	Correction service	Pass-to-pass accuracy*
Sub-metre	Tillage	OmniSTAR VBS	+/-20cm
Decimetre	Application & Seeding	OmniSTAR HP	+/-5cm
Centimetre	Row crop and bed forming	RTK Base Station	+/-2cm

A unique feature of the Auto-Guide system is the ease with which you can upgrade to a greater accuracy, without the need to replace existing equipment.

\*Auto-Guide accuracy is dependant on good satellite coverage and the effect of additional errors induced by other factors, such as operating conditions and implement set-up.



01 Auto-Guide work screen.

02 Auto-Guide cab roof-mounted Top Dock.

03 Mobile FTK base station.

04 No over/underlaps means fuel saved.

05 Maximising productivity.

06 Accurate application of inputs.



# Ultimate harvesting efficiency

Electronic combine monitoring and control is key to achieving maximum harvesting efficiency. On the new Massey Ferguson Centora and Fortia combines, these multi-functional, straightforward systems allow operators to adjust settings on-the-move and boost productivity as well as record crop yield information.

---

## Datavision II

Datavision II provides information and the ability to alter settings. The large touch-sensitive screen offers:

- Machine monitoring
- Harvesting data
- Machine settings
- Operator's manual
- Diagnostics
- Yield mapping option
- Data transfer via a PCIMCA card

From this single Harvest screen you are able to view up to eight different functions simultaneously, monitoring efficiency and ensuring maximum output is maintained, without losses.

## Electronic guardian

A vast array of engine and harvesting elements are supervised by Datavision II ensuring, for example, operating temperatures and shaft speeds are within

working limits. The Datavision system only warns the operator if a problem occurs. Therefore it is not necessary for the operator to constantly monitor numerous controls.

All combines work best with an even, constant feed. Cylinder load monitor allows operators to keep the combine working at optimum capacity while ensuring it is not overloaded.

At the same time, the screen also shows grain losses from the straw walkers and the sieves to help ensure the setting is correct.

## Constant Flow

To maintain optimum harvesting efficiency with minimum operator input, Massey Ferguson offers the intelligent but practical Constant Flow system. The key to higher outputs is to ensure the combine

is fully loaded at all times. Tests prove the system can increase capacity by up to 15% in wheat.

## Datavision III on the new MF rotary combine

Massey Ferguson's new high capacity combine harvester, the MF Fortia rotary machine, is equipped with the Datavision III monitor and control system operated through the advanced colour C2000 Virtual Terminal.

Based on the tried and tested software of Datavision II, the new Datavision III system offers enhanced functionality.

The fully ISOBUS compliant C2000 Virtual Terminal uses a touch screen, a series of buttons and a rotary dial to scroll through menus and select functions.

The extensive menus provide a range of functions:

- Working information
- Table settings
- Combine settings
- Harvesting data
- Engine monitoring
- Service
- Task Controller

The Task Controller manages a wide range of information on farm and field names, machine operation, crop yield and moisture that can be recorded and transferred simply using an SD Card.

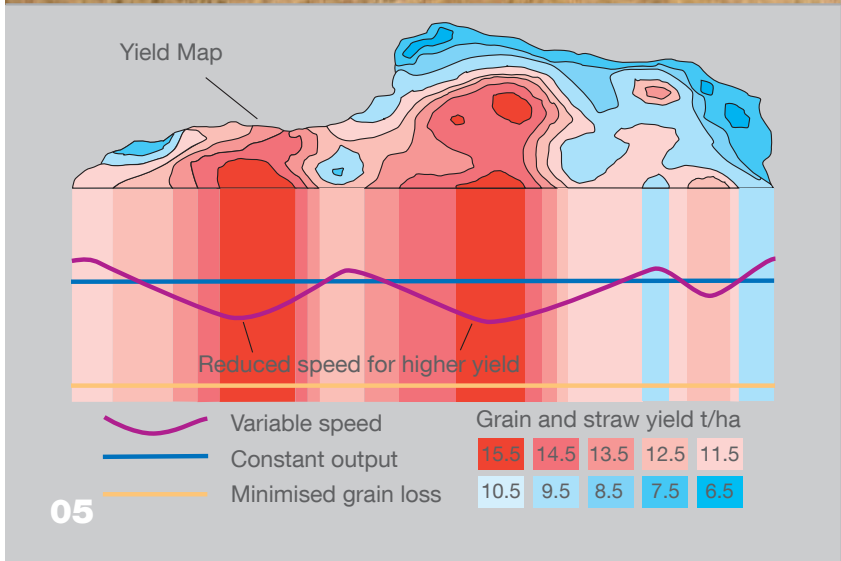
### Keep on track with Auto-Guide

The Console II terminal also provides full control of the Auto-Guide system, where specified. Along with ensuring the MF Fortia combine table's working width is fully utilised, Auto-Guide releases the operator from steering duties.

### Fieldstar Mapping for future gains

Massey Ferguson pioneered yield monitoring on combine harvesters and continues to lead with the most accurate, easy-to-use systems available.

Supplied with GTA300 Mapping software for the office computer, which includes GTA100 Communicator and GTA200 Record Keeping, makes it the ultimate information station (see pages 18-20). No other system offers such high specifications and ease-of-use.





# Maintaining a competitive edge

The ability to gather and analyse information about your business is key to maintaining profitability. Massey Ferguson's tractors and machinery utilise the GTA software, a powerful, but easy-to-use modular program package that provides you with the key information you require to keep tight control on costs and provide detail for traceability records.

GTA software, developed specifically by AGCO Advanced Technology Solutions and Farm Works Software, is a cost-effective package that will analyse and measure performance. Straightforward and easy-to-use, the programs build into a comprehensive system starting with simple records of all operations and applications.

#### **GTA100 Communicator**

GTA100 Communicator, standard with Console I and Datatronic III, is the heart of the package, allowing users to quickly download and access key details on machine performance.

From the 'basic task screen', which forms the core of the display window, users can access all the information. The screen shows three working windows that allow you to quickly find, view and update details on the farm, field and jobs.

#### **Task Manager**

Plan, monitor and control jobs. Comprehensive details of every planned or completed task are held here, providing superb management control of work in progress and setting priorities. A search facility helps sort the jobs according to, for example, crops, and field or time periods.

### Job Summary

Instant access to all information. Here you can display a quick and accurate overview of all the information stored under a job name, including start/stop times, engine hours, operator hours and area covered.

### GTA200 Record Keeping keeps track of costs

GTA200 Record Keeping maintains the intuitive format and adds further flexibility, allowing users to plan, record and create reports on tasks. In Task Planning, a 'working group' of machines, people and products can be assembled and then applied to individual fields to create multiple task plans at the same time.

### Farm and Resource Manager

Track the cost of machines, operators and inputs. Specific information, gathered on the machines is allocated to individual farms and fields using this management tool.

### Task Planning

Create a 'Working Group', of machines, people and products that can be applied to multiple fields and create job plans. For groups drilling, fertilising or spraying, it is also possible to add the products being applied.

### Farming Window

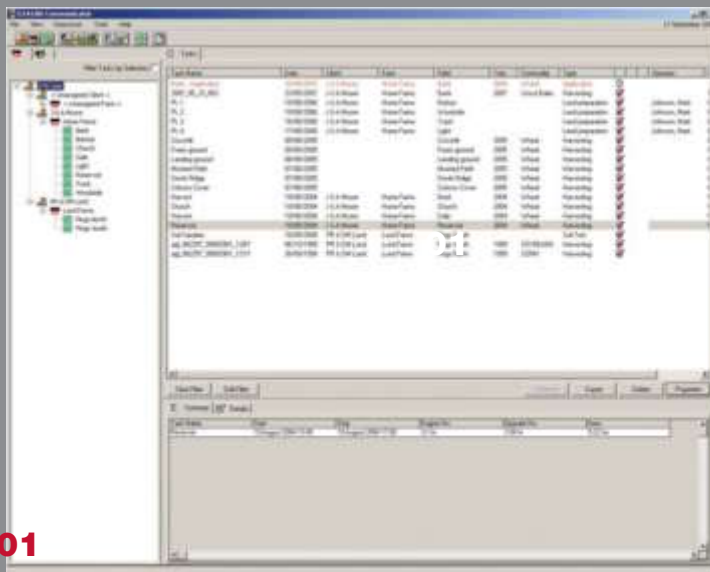
Once the fields to be worked have been selected, the 'Farming Window' appears. This allows users to enter a job name, crop and year along with operation type, e.g. drilling, cultivating etc.

### Reports provide full traceability

The key feature of the GTA200 Record Keeping software is its ability to generate a wide range of reports quickly and easily. There are a total of eleven different reports available – one giving a job summary, four for equipment and six for fields. Not only essential for effective farm management, these reports also provide the crucial traceability records often demanded by customers and crop assurance schemes.

### Invoicing innovation

Included in GTA200, the Invoicing feature allows you to create invoices quickly and easily from the completed tasks saved in the software.



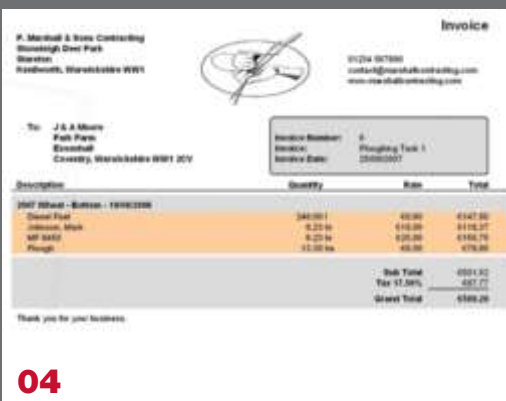
01



02



03



04



# Step up to simple mapping and precision farming

GTA software builds into a complete package that not only allows you to measure and monitor your business more effectively, but also create maps and move up to precision farming. This further enhances record keeping and allows you to plan and apply variable rates to match crop requirements.

## GTA300 Mapping your future

GTA300 Mapping further enhances the features and flexibility of this impressive software suite by adding the facility to create maps from geo-referenced information gathered on tractors and combines.

This accurate information is easily displayed as a map that can be used to identify areas, plan treatments and provide precise records of treatments and applications.

## Create map reports

- Yield data
- Product applications (as-applied maps)
- Wheelslip
- Fuel consumption
- Yield data
- Machine operation information

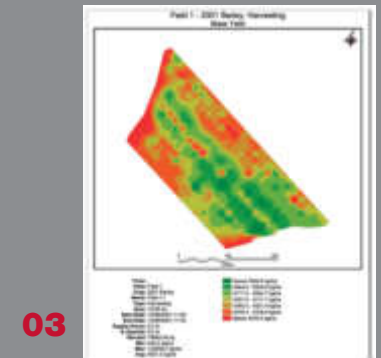
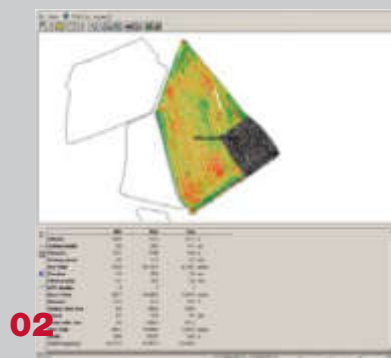
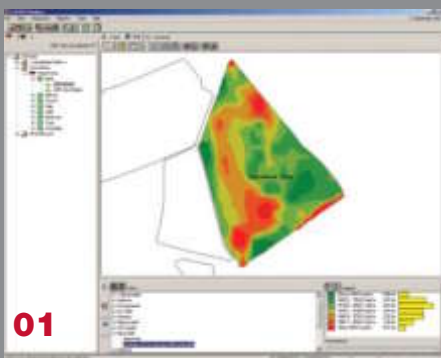
## Map tab says it all

With GTA300 Mapping an additional 'Map' tab appears on the main display screen next to 'Task'. Simply click this and geo-referenced data contained in the

highlighted task is shown as a map in the upper section of the screen. Full details are listed under various headings in the lower frame. It really is that simple.

## Set the boundaries

Select a view to suit your needs. The Field option shows the entire perimeter of a selected field or area. The Enterprise boundary determines areas within fields, helpful for 'fencing off' separate varieties or uncropped parts.





# GTA400 – Precision Farming

Precision farming offers an enormous potential to increase profits on most farms – by reducing inputs – provide irrefutable records and protect the environment. GTA400 Precision Farming software provides one of the easiest ways to plan, carry out and log variable applications.

The pinnacle of the GTA software, GTA400 Precision Farming, builds on the other elements to offer unsurpassed monitoring and control.

#### Gather what you need

The ‘open’ nature of the software allows it to use a wide range of information saved in the most common formats. This allows you to import soil test data, yield maps, as applied maps and much more.

#### Create application maps

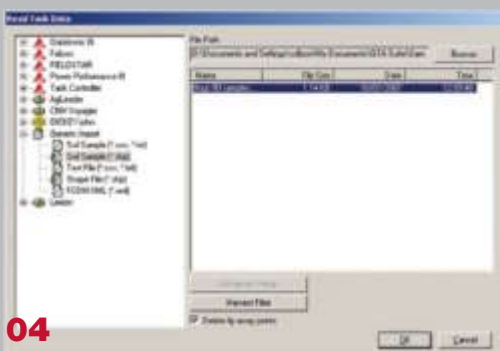
Use a wide range of map layers to take account of variances in fields and create your own application maps. Fine tune application plans to precisely suit your needs.

#### Edit treatment plans

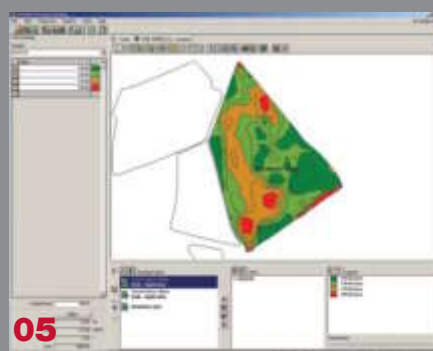
Treatment plans from service providers are quickly and easily loaded into GTA400 Precision Farming software. Users can then modify and adjust applications to ensure they precisely match exact requirements.

#### Automatic field boundaries

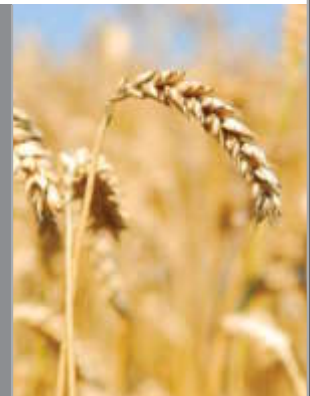
With a single click it’s possible to generate field boundaries automatically. Then you can edit the image to ‘fence off’ different varieties, conservation headlands, set-aside and other non-cropped areas.



04



05



# Customer Support

---

## AGCO Customer Support... providing local service to the global brand

Massey Ferguson is a truly global brand with machines operating all over the world, from revolutionary “little grey fergie” tractors to the latest high-tech tractors and combines. Have you ever wondered how we continue to provide industry-leading parts and service support to such a vast array of machines and technologies across the globe?

Behind every Massey Ferguson machine is the powerful aftersales support of AGCO’s Customer Support organisation.

Our main aim is to ensure that every machine - old or new - is fully supported locally, offering every Massey Ferguson owner:

- The best service in the industry
- Low cost of ownership
- A reliable and durable machine
- Minimum machine downtime
- A high resale value

### **State-of-the-art warehousing and logistics from AGCO Parts**

Of course, every Massey Ferguson dealer is fully backed-up by the AGCO Customer Support organisation which provides industry-leading parts supply through AGCO Parts’ state-of-the-art warehousing and logistics. With outstanding service levels, overnight delivery and inventory covering all Massey Ferguson machines - even those over

10 years old - we only ever supply genuine parts, and we guarantee the right fit, first time.

### **The right aftersales solution whatever the age of machine**

Whatever the age of Massey Ferguson machine, AGCO Customer Support has the right aftersales solution to save time & money, providing appropriate, affordable and reliable servicing and maintenance solutions in every situation.

### **Practical local support where you need it**

AGCO places great emphasis on providing the best service to our Massey Ferguson dealers and this extends beyond the exceptional servicing and maintenance solutions and parts supply:

- Expert training and specialist equipment
- Advanced diagnostic techniques
- Information retrieval technology to communicate the very latest parts and service information
- Highly skilled technical support groups

With aftersales support from AGCO Customer Support, it’s not just about supplying a filter or doing an oil change. It’s about providing the best solution to our customers’ needs, wrapped up with industry-leading parts and service support.



01



02



03



04



05

01 Ensuring the best service support.

02-04 Industry-leading parts supply from AGCO Parts.

05 Lifetime support for all Massey Ferguson machines.

# Our promise to you

Our mission at Massey Ferguson, since the company was founded, has been to design, engineer and manufacture reliable, trustworthy and innovative tractors. Tractors that people recognise the world over.

---

## VISION

Our vision for the world of agricultural machinery has always been clear; to produce worthwhile and innovative solutions for professional farmers feeding the world. Always recognisable, the Massey Ferguson brand of products signifies technological advancement, enhanced design, strict testing and quality manufacturing which is consistently trustworthy and hardworking.

## INNOVATION

We've always been one step ahead when it comes to innovation. Our founder, Harry Ferguson is proof of that.

Through continual questioning and analysis of customers' needs, our products are designed, tested and built to enhance productivity, efficiency and convenience, constantly pushing the boundaries of farm machinery.

From the simplest push of a button to technological innovations in engine and transmission efficiency, we strive to make life simpler for the operator.

## LEADERSHIP

Massey Ferguson is the most widely sold tractor in the world, making us the leaders in the agricultural arena. We've won awards for our class-leading technology and advancement in design and we're already driving ahead, environmentally and economically.

## QUALITY

It takes certain distinctive attributes to make a quality product. At Massey Ferguson, this distinction starts at the drawing board and doesn't stop. Every stage of manufacturing, from the building and testing process to sourcing the best components, demands excellence. Our products and services meet the most stringent standards allowing us to deliver our promises, confidently.

## RELIABILITY

We don't let a Massey Ferguson machine out of our sight until we are 100% sure it will perform to the high standards you expect. Only after rigorous and pain staking testing both in simulations and in the field, will we allow our products to leave the factory. Whatever you put your tractor through, day after day, season after season, we can guarantee we've already tested those limits and gone beyond them.

## SUPPORT

Agriculture can be a solitary business, that's why we make sure that you can get support whenever you need it and at crucial times of the year. Be assured of sustainability from more than 3,200 dealer outlets in over 140 countries and a comprehensive machinery distribution network, you'll be part of dedicated family of specialists who make it their business to give you genuine, top quality service support.

Equally, we won't let an opportunity slip through your fingers. If you have the commitment but not necessarily the financial resources to compete in today's market-driven climate then AGCO Finance could have the solution. Ask your local dealer for more information.

Financial options are market specific but can include leasing, hire purchase, contract hire and loan facilities.

## PRIDE

Here at Massey Ferguson, pride means many things to us. It's in everything we do and it shows. It's in our proud heritage, our unique product design and our ongoing support to our customers.

## COMMITMENT

We are deeply committed to delivering the highest of expectations and to build quality, reliable products with innovative features that are backed by the best support packages. Ultimately, we are committed to continuous growth and profitability for all, whilst recognising the needs of both large and small businesses through professionalism and quality.





# Maschine des Jahres 2006

Agritechnica



MF Technology	Machine Control						
	Tractor Control & Monitoring			Implement Control	Automatic Steering Guidance	Harvesting Control & Monitoring	
	Transmission Controller	ITCS	Datatronic	ISOBUS	Auto-Guide	Datavision II	C2000

#### MF Tractors

MF 5400	●	–	–	–	–	–	–
MF 6400	●	○	○	○	○*	○*	–
MF 7400	●	○	○	○	○*	○*	–
MF 8600	●	●	●	●	○	○	–

#### MF Harvesting

MF Centora Combine	–	–	–	–	–	○	–
MF Fortia Combine	–	–	–	–	○	–	○

#### MF Implements

MF 2100 Baler*	–	–	–	●	–	–	–
MF 555 Planter	–	–	–	○	–	–	–

MF Technology	Machine Management		Precision Farming		
	Machine Management	Record Keeping	Mapping	Precision Farming	Yield Mapping
	GTA100	GTA200	GTA300	GTA400	FieldStar

#### MF Tractors

MF 5400	–	–	–	–	–
MF 6400	○	○	○	–	–
MF 7400	○	○	○	–	–
MF 8600	○	○	○	–	–

#### MF Harvesting

MF Centora Combine	○	○	○	–	○
MF Rotary Combine	○	○	○	–	○

#### MF Implements

MF 2100 Baler*	○	○	–	–	–
MF 555 Planter	○	○	○	○	–

- = Standard
- = Optional
- = Not applicable/available
- \* = Please check availability with local Massey Ferguson dealer

# MF Technology highlights

For more than 50 years, Massey Ferguson has led the world in the development of technology designed to improve the efficiency of food production everywhere. The quest continues, with the latest monitoring, control and guidance systems highlighted here.

## 01 Transmission Controller

Automates routine transmission operations, 4-wheel drive, differential lock and PTO engagement, reducing operator fatigue and prolonging the life of key components.

## 02 Datatronic III through Console I

Manages complex tasks, such as headland procedures, implement control and spool valve settings, providing a significant boost to productivity and eliminating many repetitive aspects of the job.

## 03 ISOBUS Compatibility

Console I and C2000 Virtual Terminal are fully ISOBUS compatible, allowing implements designed to the same international standard to be controlled and monitored via a single terminal, reducing workload and cab clutter while increasing productivity.

## 04 Auto-Guide

Automatically steers the machine to ensure optimum use of the implement's working width, saving time, fuel and input costs, reducing fatigue and raising output.

## 05 Datavision II and C2000

Supervises an array of harvesting functions, alerting the operator to, for example, changes in temperatures or shaft speeds, ensuring the combine is working at maximum efficiency.

## 06 Fieldstar

The innovative yield monitoring system, measures crop yield and its variation within the field, enabling underperforming areas to be highlighted for further investigation.

## 07 GTA Software

Simple-to-use, GTA Software is a highly cost-effective means of analysing and measuring performance. Can build into a full mapping and precision farming package, providing full traceability and transparency.

