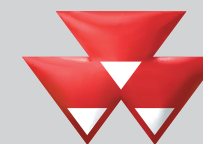


MF 900



Loader Implements

MF 900 Series



MASSEY FERGUSON

Purpose designed to suit every task - down to the ground

The best loaders in the world deserve the best implements, purpose designed for the machines that carry them and to suit the widest range of tasks. Here they are - the Massey Ferguson MF 900 Series Loader implement range from the world's leading manufacturer.

Precision manufactured and purpose designed to suit MF 900 Series Loaders, this range of implements provides the widest choice available. Versatile, high quality implements, developed through a rigorous R&D programme and supported by a dedicated network of Massey Ferguson dealers, offering first class after-sales support. To assist in choosing the right implement for your job they have been organised into 6 categories and colour coded for easy reference:

- **Bale handling.** For square and round bale handling. A highly flexible range, for every situation and budget.
- **Buckets.** Featuring a conical 'hopper-shaped' design, making them non-spill whilst easy to fill. A wide range, suitable for virtually all tasks.
- **Silage.** For use in silo, or clamp and with diet feeders. Ideal for general silage management and distribution.
- **Forks.** Powerful and adaptable, for pallet handling plus general manure and stone work.
- **Lifters.** Assured, safe bag handling.
- **Accessories.** Several essential add-on's to complement the MF 900 Series Loader implement range.

- **CLIC-ON.** Fitted as standard on all MF 900 Series Loaders, the Clic-on device helps to ensure that implements are securely and automatically locked on the tool carrier. Clic-on makes implement attachment a whole lot easier and significantly safer.



- **SELECTO-FIX.** Many attachments in the range are equipped with 'Selecto-Fix'. This provides a rapid, easy and positive hydraulic connection, with no risk of spillage or leakage.



Bale Handling



Buckets



Silage



Forks



Lifters



Accessories



Bale handling

This comprehensive range of bale handling implements has been thoughtfully designed to provide safe, efficient and reliable operation, through the complete spectrum of bale handling and distribution tasks, from field to yard.

Round bale spike

Ensures safe transportation of round bales and includes a short tine to eliminate bale rotation whilst stacking. Supplied with backplate and is also offered as an attachment to fit a pallet fork frame.



DB 4000

Up to four big bales can be safely and simultaneously handled by varying the height between the upper bale grab and the tines. This design feature overcomes the risk of dropping the bales during transportation or stacking.



Quadrogrip

The market leader in handling round or square bales. The design of the hydraulically operated arms provides independent locking for easy alignment, plus virtually silent operation. Accommodates bale widths from 60 cm up to 200 cm.



Flexibal

With hydraulic sideways adjustment, 125 mm rotating steel tubes gently cradle wrapped bales up to 180 cm dia., eliminating plastic damage. Once removed, the rotating tubes reveal steel spikes suitable for handling unwrapped bales or pallets up to 1000 kg. An optional hydraulic bale support enables end-on stacking.



Silosplit

A unique silage bale handler and splitter. Cuts out the hard work of cutting straw and silage bales with one smooth action and without the need for extra, complicated hydraulics. Supplied with an aluminium safety guard.



Flexigrip

For the gentle handling of wrapped bales and 'end-on' stacking (up to three bales high), thus reducing the risk of air and moisture penetration into the bale. Hydraulically operated arms provide independent locking for easy alignment. Bale sizes from 120 cm up to 200 cm.



DB 2115

Features a high lift bale spike which gives an extra 115 cm lifting height, enabling you to stack up to five 120 cm bales. Maximum bale size 130 cm.



Unigrip

Proven, 'rounded' design with low net weight and featuring modified arms to spread pressure evenly over the bale. Similar to Flexigrip but also well suited to handling smaller square bales. Available in 2 sizes to suit bales from 90 cm to 160 cm dia.



Bale handling and buckets

All buckets are not created equal. The MF 900 Series Loader buckets are simply better. The range consists of 5 Series, to suit varying workloads, with all buckets characterised by a conical 'hopper-shaped' design and laser-cut ends for non-spill, non-drop ability. Also included are special Grading and High-Tipping buckets.

Note, all volumes shown are 'heaped'.

Square bale fork - Safety

Available in two widths, and featuring vertically folding tines for additional safety during transportation and handling. The upper section is designed to eliminate bales falling back, after unloading at full height, when reversing. Optional back-rests and large-bag lifter also available.

Available in 2 widths, 140 cm (2-5 tines) and 190 cm (5 tines).



Square bale fork

Simple, robust, but ideal for both round and square bales. The spacing of the tines can be adjusted along the box section from 80 cm to 130 cm. An optional U-shaped vertical rear extension can be supplied to help support the top bale. Width 140 cm.



Series H

Soil buckets, the most popular and flexible in the range. A short bucket base means these are well suited to heavier tasks. Available in 5 widths from 135 cm (0.54 m³) up to 240 cm (0.95 m³).



Series HT

Soil buckets, with teeth. Similar to the H Series, all the larger buckets in both these ranges have extra reinforcement between the back and the base. Available in 4 widths from 135 cm (0.54 m³) up to 210 cm (0.82 m³).



Buckets, silage handling and distribution

From the Multibenne, a perfect all round silage handling implement, to the versatile Silograb, this range includes some of the most reliable and innovative silage handling equipment on the market today.

Series HD

The strongest buckets in the whole range. Based upon the H Series but feature; 20% thicker steel, a more powerful cutting edge, plus wider and longer floor reinforcement. Available in 4 widths from 185 cm (0.72 m³) up to 260 cm (1.03 m³).



Series HV

For users whose tasks require large volumes, e.g. carrying grain, beet and feed. The large capacity is achieved through innovative bucket design, being deeper and taller than average. Available in 4 widths from, 200 cm (1.16m³) up to 260 cm (1.85 m³).



Series L & LV

An excellent choice for lighter duties and where budgets are limited. Available in 4 widths from 130 cm (0.51 m³) up to 220 cm (1.25 m³).



Grading bucket

Designed to provide excellent driver visibility, to the tip of the bucket, through its low back plate. Special, 10 mm thick angle iron, reinforces the 20 mm subframe plates, making this bucket the ideal implement for grading tasks. Width 220 cm (0.65 m³).



High tipping bucket

Increases loading height by 120 cm which means even a short, compact front loader can fill a high trailer. The bucket tips from the front edge, removing the necessity to wait for the front edge to clear the trailer side before reversing. Width 120 cm (2.00 m³).



Multigrab HD

Extremely powerful silage grab which gives a block with an excellent cut - reducing the admission of air and heat within the clamp. Can be used for many other demanding fork and bucket tasks. Available in 3 widths from, 160 cm (0.86 m³) up to 200 cm (1.14 m³).



Maxi grapple

A large jaw opening enables it to handle a wide range of materials, including large bales, plus many other types of load. Grappling arm can easily be removed if required. Available in 3 widths, from 210 cm up to 260 cm.



Silograb

The tines of this implement are mounted within a hardened box section, their close distribution eliminating silage spillage. Upper jaw tines follow a circular movement producing a clean cut. Available in 7 widths, from 130 cm (0.69 m³) up to 250 cm (1.33 m³).



Silage handling and forks

This range includes the most powerful fork on the market plus pallet forks with optional accessories. These implements are specifically designed to take the demanding loads and wear and tear of the jobs they are built for.

Multibenne

A perfect all-round silage implement, from loading diet feeders, to shovelling manure and other materials. A host of other design features make it a superb working implement. Available in 7 widths, from 130 cm (0.66 m³) up to 250 cm (1.27 m³).



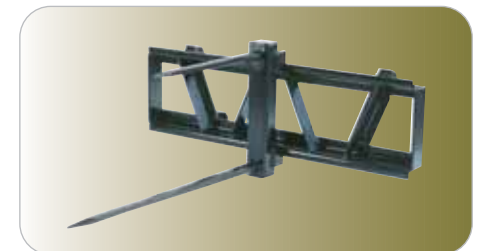
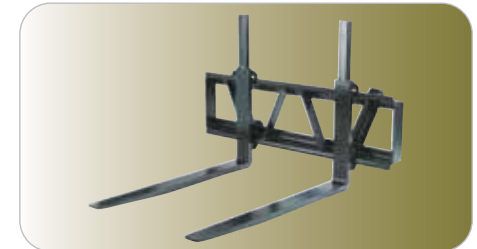
Silocut

Produces perfect silage blocks in seconds. Hardened cutting blades at both the front and side produce a clean cut surface in the clamp, critical for maintaining silage quality. Available in 3 capacities, from 0.95 m³ up to 1.45 m³.



Pallet forks

These can be specified with either: 97 cm forks (1000 or 1600 kg capacity), or 120 cm forks (2500 kg capacity). The upper profile is manufactured in one piece and is able to be adjusted laterally to suit the load, which is distributed over a large area thanks to the wide load-bearing surface. This provides a very stable fork with immense strength. Optional top grabs and spike attachments can also be fitted.



Manure forks

Manufactured with a specially hardened box section. The tines are fitted prior to painting, and secured with a very high torque. A top performer with a long service life. Available in 3 widths, from 130 cm up to 230 cm.

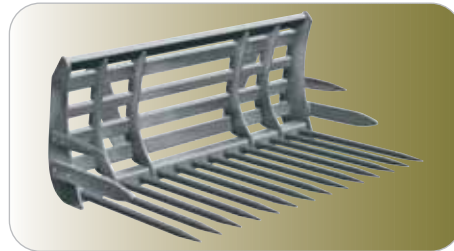


Forks, lifters and accessories

An indispensable **Big Bag Lifter**, with a clever design feature, plus several essential accessories complete the MF 900 Loader implement range.

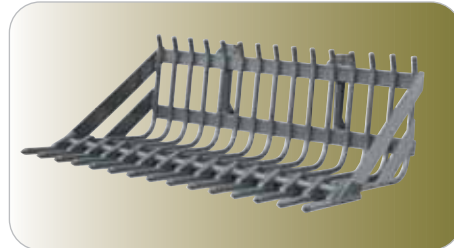
Universal fork

Without doubt the most powerful universal/stone fork on the market. It offers excellent visibility whilst retaining exceptional strength. The side forks feature ultra-hardwearing teeth. Available in 2 widths, 150 cm and 200 cm.



Professional stone fork

A heavy-duty fork, specially designed to retain the material in the bucket after loading. The leading edge has replaceable, downward facing teeth, fixed to a rigid, high quality framework. Available in 2 widths, 150 cm and 200 cm.



Big bag lifter

Designed with a hook that is slightly offset to the side, giving the operator an unimpaired view when connecting with the bag handle. Has a width of 120 cm, a height of 170 cm and a maximum loading of 1000 kg.



Counterweight

An essential accessory. This high quality counterweight can be easily fitted and removed. It has an empty weight of 120 kg and a maximum, ballasted weight, of up to 1000 kg. Supplied without ballast.



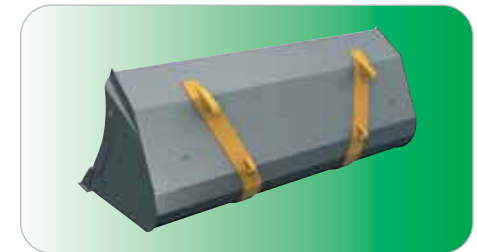
3-Point linkage

Can be used in a similar way to a tractor's 3-point linkage to help transport implements around the farm.



Euro hooks

Weld-on Euro Hooks allow any implement to be modified for use on MF 900 Series Loaders.



MF 900 Loader Implements – Specifications

BALE HANDLING

Round Bale Spike

Lower Tine Length (cm)	125
Overall Width (cm)	115
Weight (kg)	60

Quadrogrip 200

Overall width (cm)	235
Bale size min-max (cm)	60-200
Arm Length (cm)	130
Weight (kg)	418

Silosplit M HD

Blade Length (cm)	140	170
Frame width (cm)	120	120

DB2115

Increased lifting height (cm)	115
Number of bales (bale height 120cm)	4-5

DB4000

Bale size max (cm)	130
Weight (kg)	200

DB4000

Number of tines	4
Weight (kg)	190

Flexibal

Bale size max (cm)	180
Weight (kg)	195

Flexigrip 160 200

Bale Size min-max (cm)	120-160	150-200
Weight (kg)	242	262

Unigrip 130 160

Bale Size min-max (cm)	90-130	120-160
Weight (kg)	200	240
Weight (kg)	85	110

Square Bale Fork Safety 140 190

Number of tines	2-5	5
Tine Length (cm)	125	125
Overall width (cm)	140	190
Weight (kg)	133	168

Square Bale Fork Standard

Number of tines	2
Tine Length (cm)	82
Overall Width (cm)	140
Weight (kg)	78

BUCKETS

Buckets - H 135H 160H 185H 210H 240H

Heaped Volume (m ³)	0.54	0.65	0.72	0.82	0.95
Width (cm)	135	160	185	210	240
Depth (cm)	81	81	81	81	81
Cutting edge W x T (mm)	150x16	150x16	150x16	150x16	150x20
Height (cm)	75	75	75	75	75
Weight (kg)	147	166	205	252	294

Buckets - HT 135HT 160HT 185HT 210HT

Heaped Volume (m ³)	0.54	0.65	0.72	0.82
Width (cm)	135	160	185	210
Depth (cm)	81	81	81	81
Cutting edge W x T (mm)	150x16	150x16	150x16	150x16
Height (cm)	75	75	75	75
Number of teeth	6	7	8	9
Weight (kg)	152	172	211	259

Buckets - HD 185HD 210HD 240HD 260HD

Heaped Volume (m ³)	0.72	0.82	0.95	1.03
Width (cm)	185	210	240	260
Depth (cm)	81	81	86	86
Cutting edge W x T (mm)	150x20	150x20	200x20	200x20
Height (cm)	75	75	75	75
Weight (kg)	235	285	340	365

Buckets - HV 200HV 220HV 240HV 260HV

Heaped Volume (m ³)	1.16	1.28	1.70	1.85
Width (cm)	200	220	240	260
Depth (cm)	104	104	109	109
Cutting edge W x T (mm)	150X16	150X16	200X20	200X20
Height (cm)	85	85	98	98
Weight (kg)	273	294	415	443

Buckets - L 130L 180L

Heaped Volume (m ³)	0.51	0.71
Width (cm)	130	180
Depth (cm)	80	80
Cutting edge W x T (mm)	100X12	100X12
Height (cm)	75	75
Weight (kg)	136	171

Buckets - LV 200LV 220LV

Heaped Volume (m ³)	1.13	1.25
Width (cm)	200	220
Depth (cm)	100	100
Cutting edge W x T (mm)	100x16	100x16
Height (cm)	85	85
Weight (kg)	243	262

Grading Bucket 220

Heaped Volume (m ³)	0.65
Width (cm)	220
Depth (cm)	110
Cutting edge W x T (mm)	150x20
Height (cm)	50
Weight (kg)	337

High Tip Bucket 230

Heaped Volume (m ³)	2.00
Width (cm)	230
Depth (cm)	120
Cutting edge W x T (mm)	150x20
Height (cm)	120
Weight (kg)	480

SILAGE HANDLING

Multigrab HD160 180 200

Width (cm)	160	180	200
Depth (cm)	80	80	80
Volume (m ³)	0.86	1.00	1.14
Weight (kg)	460	500	560

Maxigrapple 210 210T 240 240T 260 260T

Width (cm)	210	210	240	240	260	260
Depth (cm)	81	81	86	86	86	86
Length of teeth (cm)	-	24	-	24	-	24
Weight (kg)	605	620	640	655	710	730

Silograb 130 150 170 190 210 230 250

Width (cm)	130	150	170	190	210	230	250
Depth (cm)	85	85	85	85	85	85	85
Volume (m ³)	0.69	0.79	0.90	1.01	1.11	1.22	1.33
Number of tines	7+7	8+8	9+9	10+10	11+11	12+12	13+13
Weight (kg)	250	270	300	320	355	377	405

Multibenne 130 150 170 190 210 230 250

Width (cm)	130	150	170	190	210	230	250
Depth (cm)	80	80	80	80	80	80	80
Volume (m ³)	0.66	0.76	0.86	0.96	1.07	1.17	1.27
Number of tines	7	8	9	10	11	12	13
Weight (kg)	280	304	360	386	423	447	477

Silocut 150 190 230

Working Width (cm)	155	195	225
Block Size (cm)	152x80	192x80	232x80
	x80	x80	x80
Block Volume (m ³)	0.95	1.20	1.45
Opening (cm)	80	80	80
Number of tines	12	15	18
Weight (kg)	420	495	605

FORKS

Pallet Forks 1000 1600 2500

Maximum load (kg)	1000	1600	2500
Fork length (cm)	97	97	120
Fork width (cm)	140	140	140
Fork height (cm)	50	92	95
Fork type	profile	wrought	wrought
Weight (kg)	122	160	170

Manure Fork 130 150 170 190 230

Width (cm)	130	150	170	190	230
Depth (cm)	85	85	85	85	85
Number of tines	7	8	9	10	12
Weight (kg)	123	136	152	165	203

Universal fork 150 200

Width (cm)	150	200
Height (cm)	73	73
Tine length (cm)	98	98
Number of bottom tines	14	18
Tine spacing (cm)	11	11
Weight (kg)	249	310

Stone Fork 150 200

Width (cm)	150	200
Height (cm)	73	73
Number of bottom tines	14	18
Tine spacing (cm)	11	11
Weight (kg)	235	292

ACCESSORIES FOR PALLET FORK FRAME

Bale Spike

Tine Length (cm)	125
Weight (kg)	24

Log Grab Attachment

Weight (kg)	85
-------------	----

LIFTING EQUIPMENT AND ACCESSORIES

Big Bag Lifter

Maximum Load (kg)	1000
Height (cm)	170
Frame Width (cm)	120
Weight (kg)	118

Counterweight Box

Weight Empty (kg)	125
Minimum Filled weight (kg)	1000

3 Point Linkage

Weight (kg)	78
-------------	----

www.masseyferguson.com



MASSEY FERGUSON is a worldwide brand of AGCO Corporation
© AGCO Limited. 2005 | A-English/1105/8m | 13529/1105/50m

